



RUHR
UNIVERSITÄT
BOCHUM

RUB



GENETIC
PSYCHOLOGY



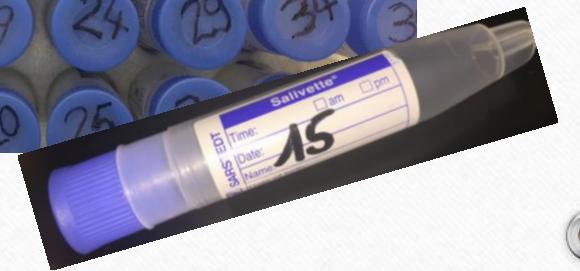
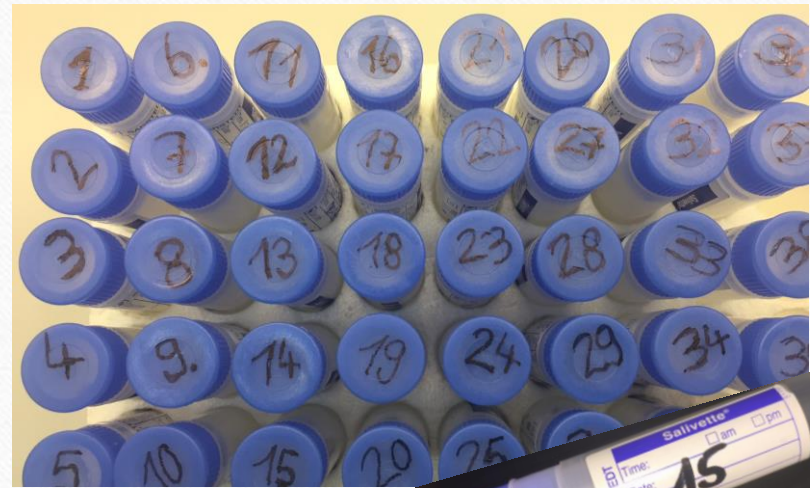
HOW TO LABEL AND SHIP SAMPLES

a pictured guide



How to label

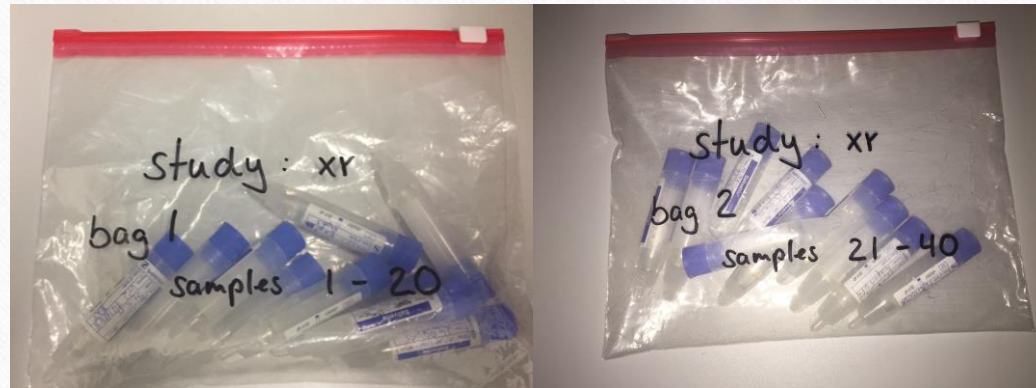
- use consecutive numbers for identifying your samples, no matter what your subject or patient code is
 - label them on cap and side
- the lab will stick to the numbers you provided when assaying the samples
- make sure to use a waterproof pen that can overcome thawing



How to pack

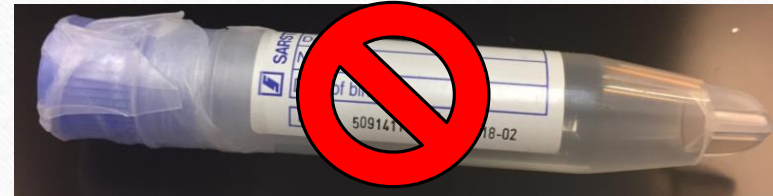
- put exactly **20 salivettes** in each zipper bag
- label the bags with a waterproof pen or adhesive label as follows:

bag 1 samples 1 to 20
bag 2 samples 21 to 40
bag 3 samples 41 to 60
to be continued...



Please do not:

- wrap tape around the tube since it will not fit in the centrifuge anymore
- put the cotton swab in the lower part of the Salivette
 - the swab must be returned to the small beaker/insert
- use green-capped salivettes!
(contains citric acid, interferes with most assays)



How to ship

- please ship the samples to

Dr. Dirk Moser / Annika Mühlenkamp
Molekulargenetisches Labor
AE Genetic Psychology
Fakultät für Psychologie
Ruhr-Universität-Bochum
Universitätsstr. 150
IB 5/ 107
Postfach 20
44801 Bochum

when you need to provide a contact phone number, please use: +49 234 32 24616

Please attach the following statement to your shipment:

Zollerklärung

Diese Sendung enthält menschliche Speichelproben. Die Proben stammen aus einer staatlich unterstützten wissenschaftlichen Studie und sollen von dem Empfänger auf Hormone untersucht werden. Sie sind ungefährlich und dienen ausschließlich wissenschaftlichen Zwecken.

Kein kommerzieller Wert.

Wert nur für Zollzwecke: 0,1 Euro.

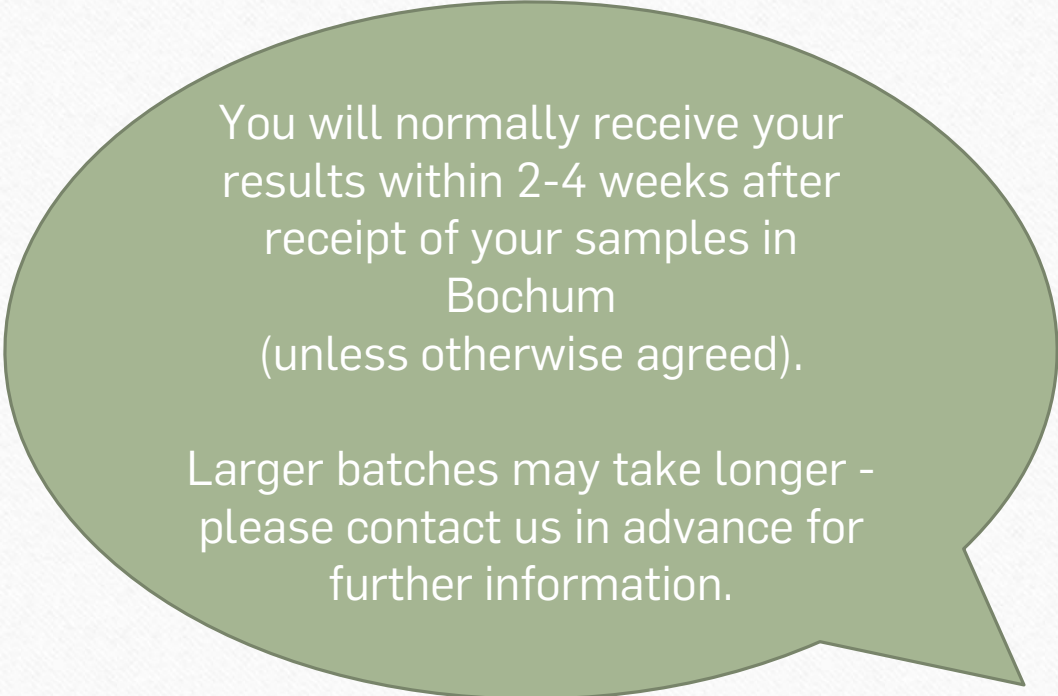
Warentarif-Nummer: 30012010

Bitte kontaktieren Sie bei Fragen

Dr. Dirk Moser unter Tel: +49 234 32 24616 (Ruhr-Universität-Bochum)

Q&A


How soon will I receive my results?




You will normally receive your results within 2-4 weeks after receipt of your samples in Bochum (unless otherwise agreed).

Larger batches may take longer - please contact us in advance for further information.

Q&A



Do I need to ship my samples refrigerated?



You do not need to ship your samples refrigerated if you want cortisol or amylase assayed.

We recommend dry ice, when other analytes should be assayed.

Q&A

How do I ship my samples to you?

You should use a courier service, that delivers samples within 3-4 working days (e.g. TNT, FedEx, UPS, etc.)

Please remember that you do not state **any commercial value** when doing the paperworks

- ⇒ write 0.1\$ in the form
- ⇒ name the following customs tariff number: **30012010**
- ⇔ otherwise we have to pay taxes

To avoid delay at customs service, please print out the following slide and put it on top of your shipping box.